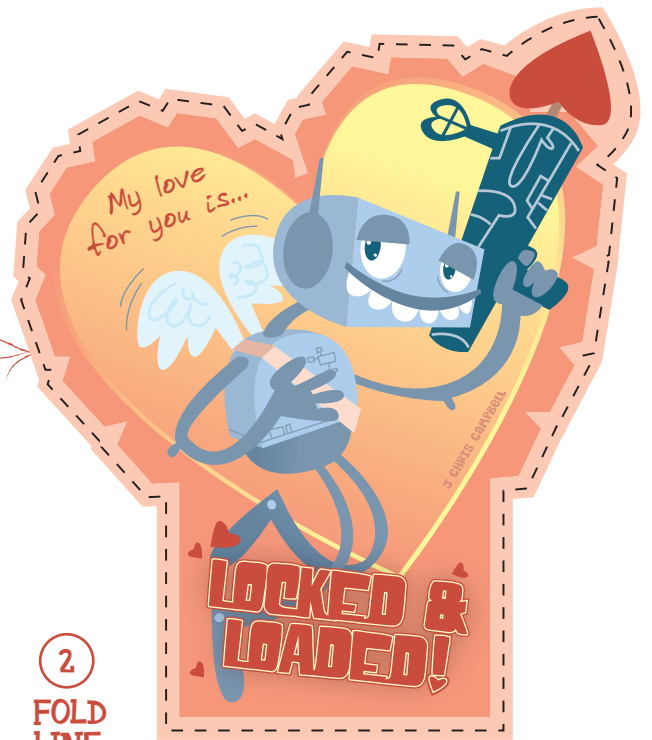


# Valentine's Day

## Card & Envelope

Don't keep it tightly bottled up like some container in the back of a fridge. Spread your love like jam on hot toast. Or shoot it like a heart arrow from a large robotic gun. Whatever works for you.

Why not just cut out this card and envelope for that special person in your life. All you need is scissors, glue and a color printer.



1 CUT

2  
FOLD  
LINE

3  
Glue

FOLD LINE

FOLD LINE

FOLD  
LINE

Glue



If you enjoy love then you are sure to love enjoying Project: Romantic from AdHouse Books.

[www.jchriscampbell.com](http://www.jchriscampbell.com)  
copyright J Chris Campbell 2006

[www.adhousebooks.com](http://www.adhousebooks.com)