

2008 ORNAMENT

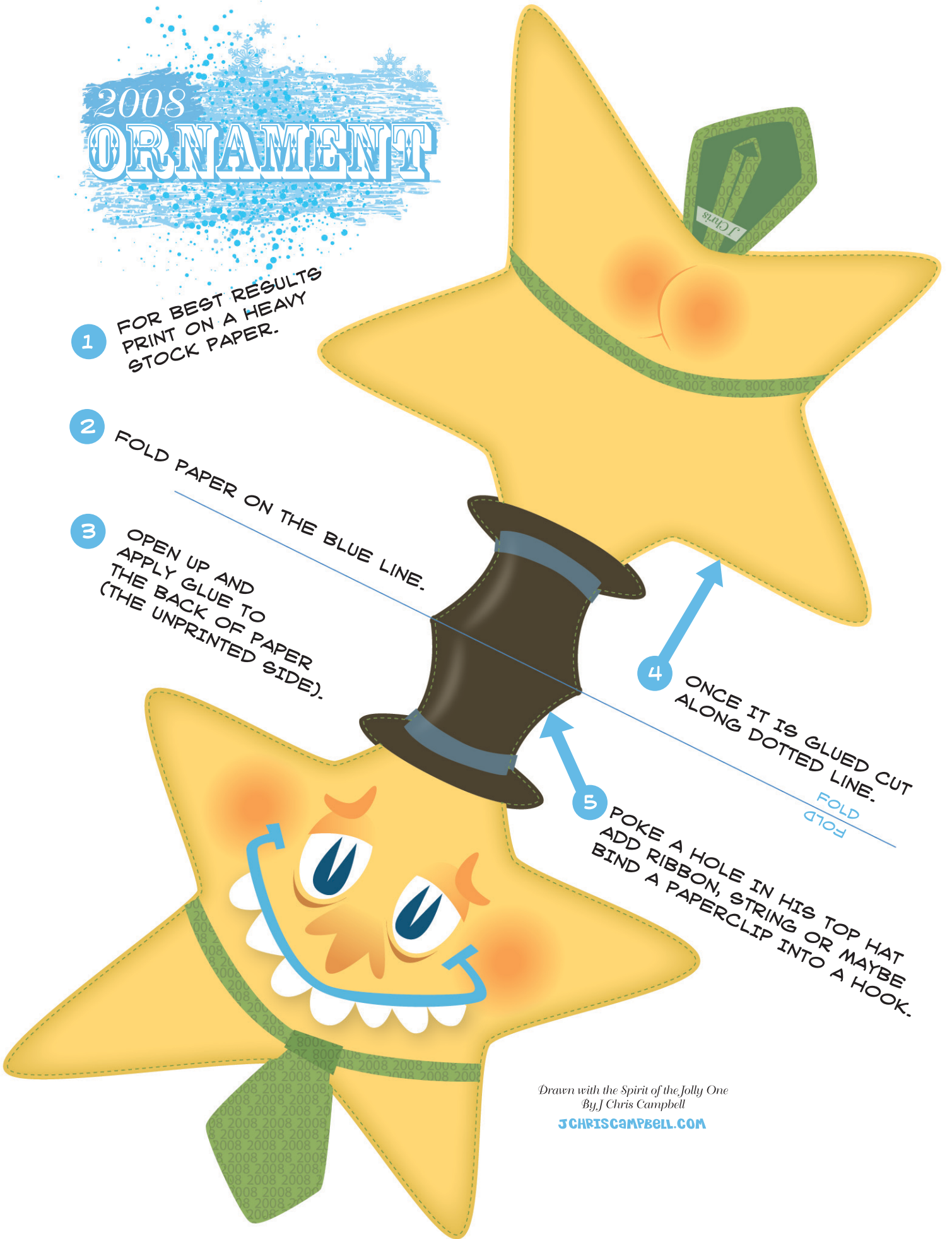
1 FOR BEST RESULTS
PRINT ON A HEAVY
STOCK PAPER.

2 FOLD PAPER ON THE BLUE LINE.

3 OPEN UP AND
APPLY GLUE TO
THE BACK OF PAPER
(THE UNPRINTED SIDE).

4 ONCE IT IS GLUED CUT
ALONG DOTTED LINE.

5 POKE A HOLE IN HIS TOP HAT
ADD RIBBON, STRING OR MAYBE
BIND A PAPERCLIP INTO A HOOK.



Drawn with the Spirit of the Jolly One
By J Chris Campbell

JCHRISCAMPBELL.COM